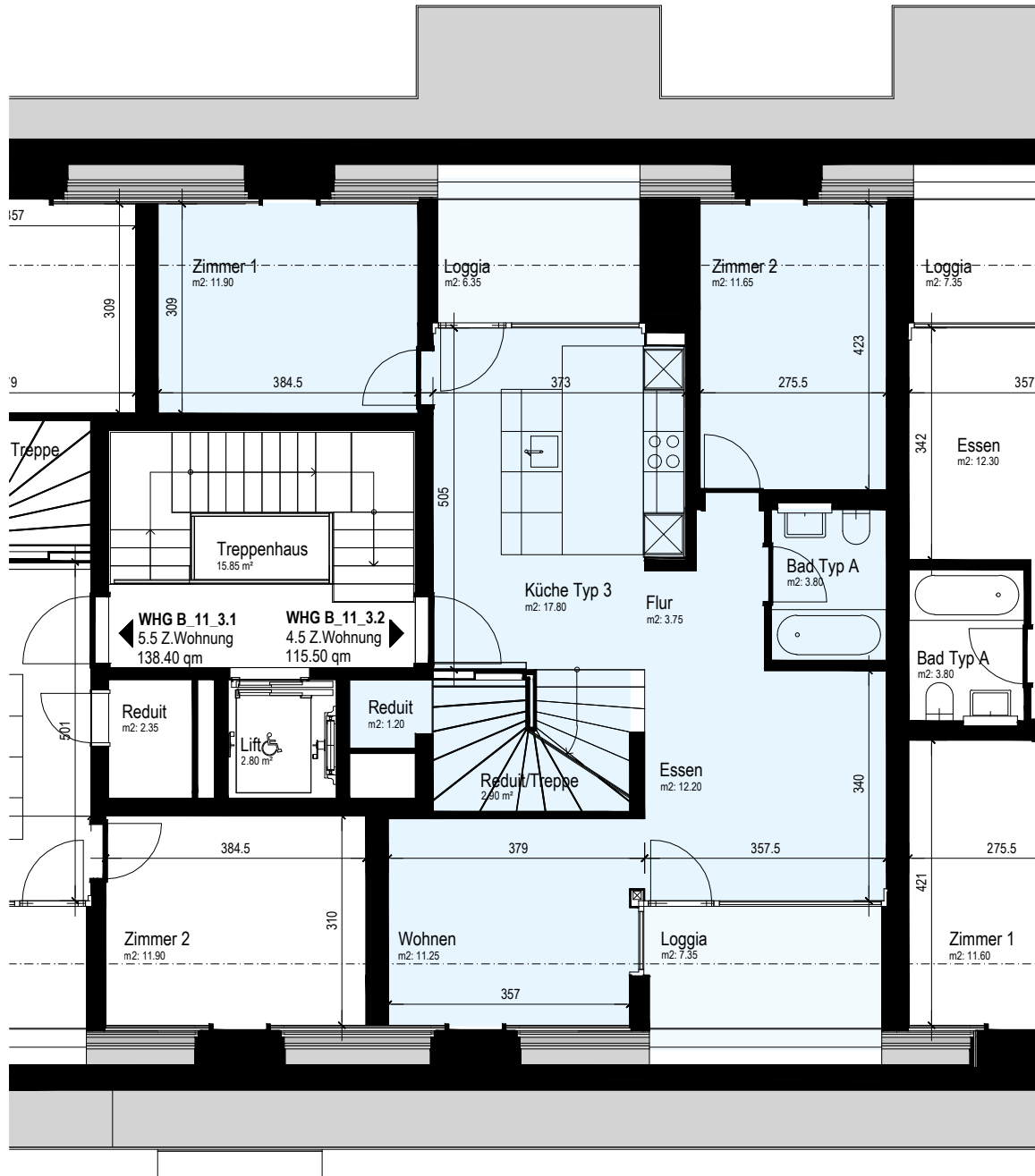
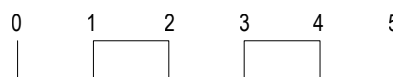


WHG B_11_3.2_4.5 -ZIMMER WOHNUNG

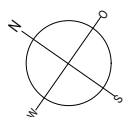
Fläche 115.50 m² | Loggia 7.40 m² / Loggia 6.35 m²



Masstoleranz von
1-3 cm im Toleranzbereich



1:100



WHG B_11_3.2_4.5 -ZIMMER WOHNUNG

Fläche 115.50 m² | Loggia 7.40 m² / Loggia 6.35 m²



Masstoleranz von
1-3 cm im Toleranzbereich

